

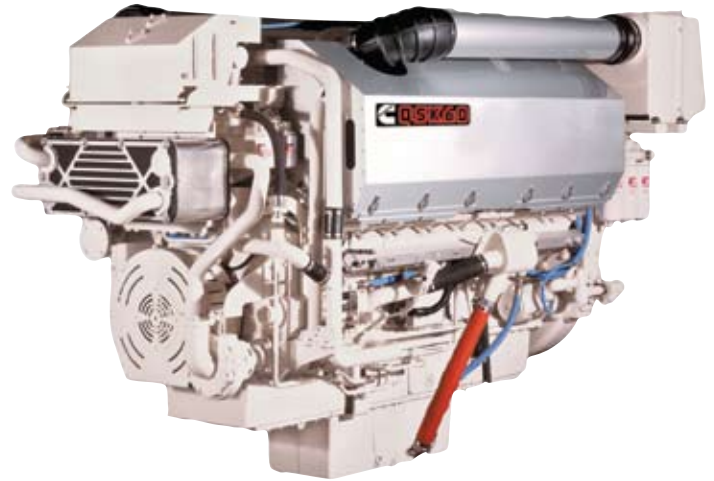
# QSK60 HPI

## MARINE PROPULSION AND AUXILIARY ENGINES



### SPECIFICATIONS

ENGINE TYPE	V-16 CYLINDER, 4 STROKE DIESEL
BORE & STROKE	159 mm x 190 mm (6.25 in x 7.48 in)
DISPLACEMENT	60.2 L (3672 in <sup>3</sup> )
ROTATION	COUNTERCLOCKWISE FACING FLYWHEEL
ASPIRATION	TURBOCHARGED/AFTERCOOLED
EMISSIONS	IMO TIER I



### RATINGS

ENGINE MODEL	OUTPUT POWER			ENGINE SPEED RPM	RATING DEFINITION	FUEL CONSUMPTION	
	kW	HP	kWe*			RATED SPEED L/hr (gal/hr)	ISO** L/hr (gal/hr)
<b>VARIABLE SPEED</b>							
QSK60-M HPI	1492	2000	-	1600	CONTINUOUS	363.9 (96.1)	252.0 (66.6)
QSK60-M HPI	1492	2000	-	1800	CONTINUOUS	363.4 (96.0)	256.4 (67.7)
QSK60-M HPI	1641	2200	-	1800	CONTINUOUS	402.9 (106.4)	278.6 (73.6)
QSK60-M HPI	1715	2300	-	1900	HEAVY DUTY	425.1 (112.3)	294.1 (77.7)
QSK60-M HPI	1864	2500	-	1900	MCD	459.1 (121.3)	313.9 (82.9)
<b>FIXED SPEED</b>							
QSK60-D(M) HPI	1563	2095	1500	1500 (50 Hz)	PRIME	372.3 (98.4)	185.8 (49.1)
QSK60-D(M) HPI	1900	2547	1825	1800 (60 Hz)	PRIME	461.4 (121.9)	236.6 (62.5)

\* kWe reflects the approximate amount of power available when used in a keel cooled genset configuration

\*\* Average fuel consumption based on ISO 8178 E3 Standard Test Cycle (variable speed models) and ISO 8178 D2 Standard Test Cycle (fixed speed models)

### FEATURES AND BENEFITS

**Engine Design** - Robust engine block designed for continuous duty operation and long life. Metric O-ring seals and edge molded gaskets eliminate fluid leaks. Ductile single-piece iron piston design with hardened liners and nitride coated rings for exceptional durability

**Fuel System** - Reliable Cummins HPI fuel system offers precise fuel injection for less smoke and responsive performance

**Cooling System** - Low temperature aftercooling. Engine-mounted titanium plate heat exchanger provides superior durability with minimal maintenance requirements

**Exhaust System** - Dry exhaust manifold with water

shielding for reduced fuel consumption and improved performance

**Air System** - Cummins turbochargers optimized for marine applications. Two pump, two loop, low temperature aftercooling for efficient operation and optimization of performance

**Lubrication System** - Standard capacity (261 L [69 gal]) or large capacity (378 L [100 gal]) oil pan available allows for longer marine grade oil change intervals. Pre-lub starter protects engine from damage due to dry starts

Cummins is a pioneer in product improvement. Thus specifications may change without notice. Illustrations may include optional equipment.

# EVERY™ PORT.

# QSK60 HPI

## MARINE PROPULSION AND AUXILIARY ENGINES



### FEATURES AND BENEFITS

**Electronics** - Quantum system electronics control engine performance by monitoring critical operating parameters. Benefits include complete engine protection, minimal smoke and optimized fuel consumption. Simplified electrical customer interface box for all vessel connections to reduce installation complexity

**Certifications** - Complies with IMO emissions regulations. Certificates of compliance are available from the U.S. EPA and Lloyd's Register of Shipping. Consult your local Cummins professional for a complete listing of current marine agency approvals for this engine

#### Optional Equipment

- Front power take-off adapter
- Touch screen color remote control panel
- Digital display
- CENTINEL™ Oil Management System allows for extended or eliminated oil changes
- ELIMINATOR™
- SAE B accessory drive
- Fully integrated type approved alarm and safety system

### DIMENSIONS

LENGTH	3357 mm	132 in	KC
WIDTH	1760 mm	69 in	
HEIGHT	2409 mm	95 in	
WEIGHT	8754 kg	19300 lb	

Dimensions and weight may vary based on selected engine configuration



Photo courtesy of Alan Haig-Brown

The tug HMS Frontier is powered by two QSK60-M engines

### THE CUMMINS ADVANTAGE

- 24 Hour Customer Support
- Reliable & Durable Products
- Best in Class Life Cycle Cost
- Comprehensive Global Warranty

### EVERY QUESTION. ANSWERED.

**Marine Website ([marine.cummins.com](http://marine.cummins.com))** - Offers the most up-to-date product specifications, installation drawings and technical information as well as answers to frequently asked questions



#### QuickServe® Online

([quickserve.cummins.com](http://quickserve.cummins.com)) - Gives easy access to parts and service information for all Cummins engines. Find the information you need with our high-speed search function and your engine's serial number

**Cummins Online Product Registration** - Register your Cummins engine quickly and easily on the Marine website to ensure quality parts and service

**Distributor Expertise** - The best source for service, parts and application assistance. To find your nearest Cummins distributor, go to the Worldwide Service Locator at [wsl.cummins.com](http://wsl.cummins.com). If you need assistance beyond what your local Cummins professional has offered, contact the Regional Office for your area or email [wave.master@cummins.com](mailto:wave.master@cummins.com)

**Global Support Network** - Backed by the strength of Cummins distribution network with marine service locations in 160 countries, Cummins engines include a comprehensive, worldwide warranty



Cummins Inc.  
4500 Leeds Avenue - Suite 301  
Charleston, South Carolina 29405  
U.S.A.

Email: [wave.master@cummins.com](mailto:wave.master@cummins.com)  
Internet: <http://marine.cummins.com>

Bulletin M10054 Printed in U.S.A. REV 11/09  
©2009 Cummins Inc.